



**MMS** *INDUSTRY*  
Metal Manufacturing Solutions



**ACGB**  
aluminium reservoirs



**OTS**



**ABRATECH**



**ACGB**  
RESERVOIRS ACGB INC.



Available for your project





---

## Welcome

Our **industrial group** specializes in the manufacturing of value-added mechanically welded products for industry applications. From the technical specification phases, we support you throughout the development stages until deliveries on your assembly lines.

---

## Our ambition

To provide you with **engineering solutions** to meet your technological challenges. Becoming your development partner for **structural mechanically welded sub-assemblies** and **specific metal tanks** for multiple industrial applications.



- Sylvain Auvy, President

About

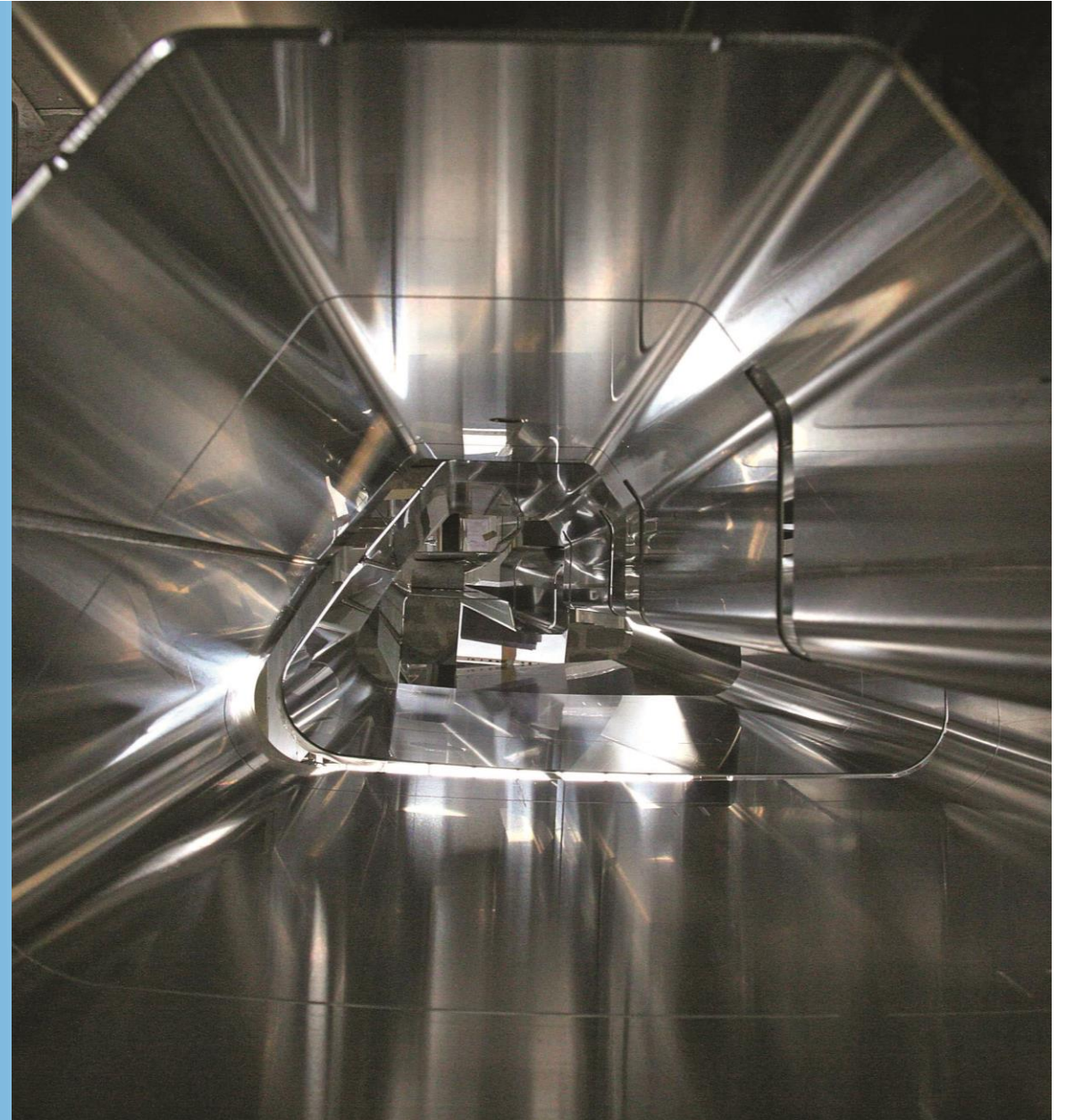
# MMS INDUSTRY

---

European systems manufacturer expert in the design, approval and manufacture of solutions Plug & Play from metal processing.

52 M€

350 





**ACGB**

Bavent (14)

**18 M€**

**110** 



**OTS Group**

Malestroit (56)

**29 M€**

**Abratech**

Locqueltas (56)

**3 M€**

**230** 



**Réservoirs ACGB Inc.**

Canada, North America

**2 M€**

**10** 

# Nos Business Units



## TANK

28 M€

- **Aluminium tanks**
- **Steel tanks**
- **Stainless steel tanks**



## SOLUTIONS

8 M€

- **Plug & Play Solutions**

Protections  
Safety Products  
Structures supports



## OUTSOURCING

16 M€

- **Industrial fine sheet metal work**

Laser cutting, punching,  
Deburring, Bending

- **Mechanical welding**

Manual Welding, Robotic Welding

- **Precision mechanics**

Turning, Milling

- **Paint and metallization**

Powder Coating, Liquid Coating, Anti-Corrosion Metallization

# TANK

Business Unit



***We are the European leader in ALU,  
STAINLESS STEEL and PAINTED STEEL tanks.***

***36 000 tanks / year***

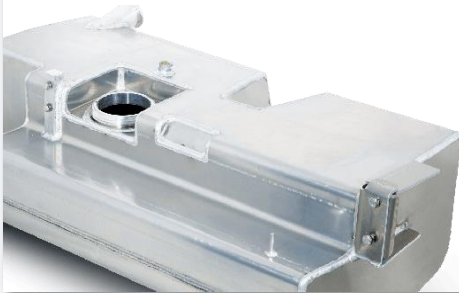
Our leitmotif is to support our industrial customers in **land and sea transport** who face hydrocarbon storage problems by **maximizing the volume** of STEEL, ALUMINIUM and STAINLESS-STEEL TANKS to be specifically adapted to their needs.



# Key figures

## Aluminium tanks

- 16 000 tanks /year
- Turnover : 17 M€
- 50 years of expertise
- 150 conceptions / year
- Capacity 2 to 12 000L



## Steel tanks

- 18 000 tanks /year
- Turnover : 8 M€
- 40 years of expertise
- Capacity 30 to 600L



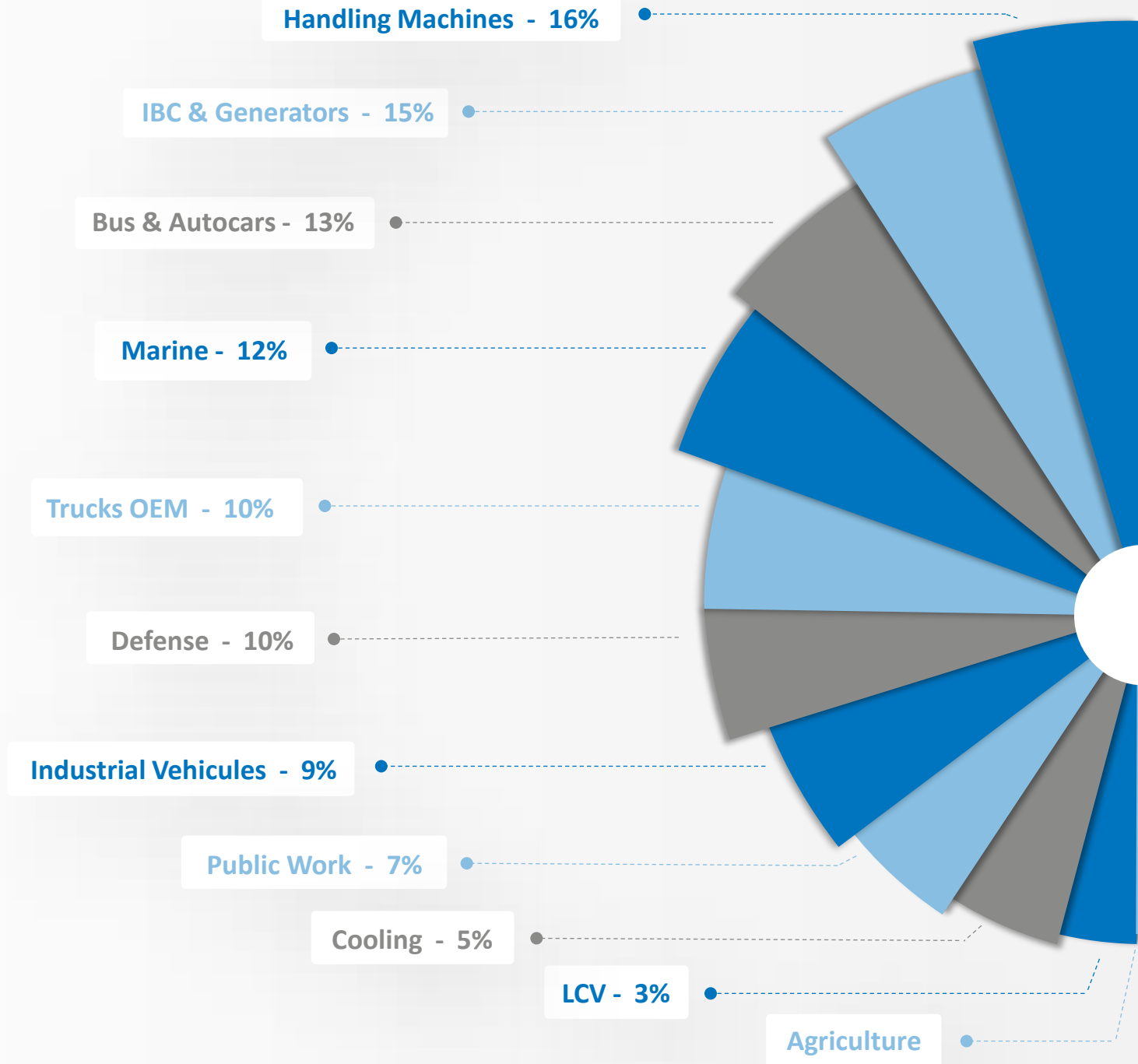
## Stainless steel tanks

- 2 500 tanks /year
- Turnover : 3 M€
- 10 years of expertise
- Capacity 2 to 600L



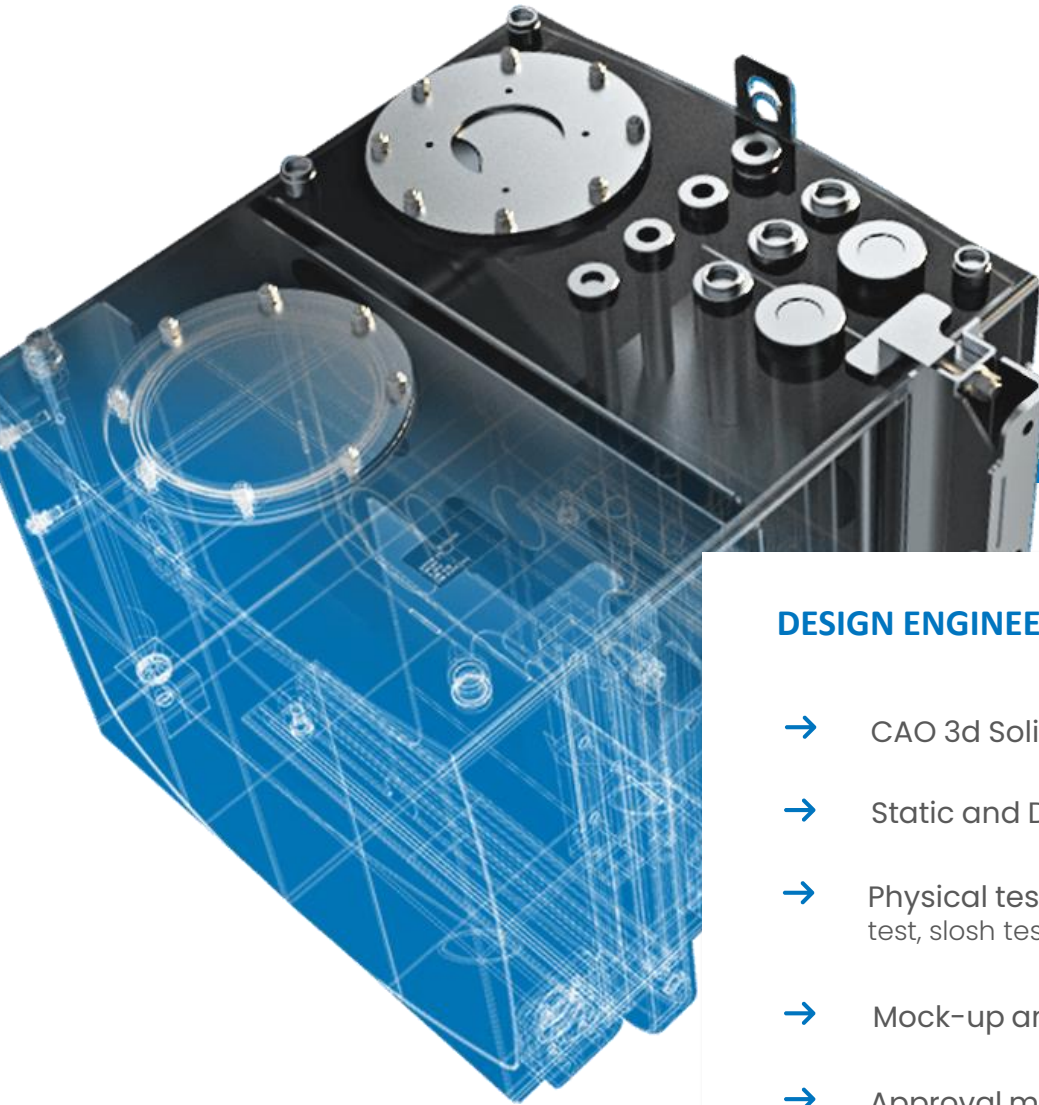
## Sectors of activity

Our customers are **manufacturers of land and maritime transport**, in the sectors of handling, heavy goods vehicles, construction and earthmoving, cooling, the agricultural sector, defence, energy and, of course, boating.



# EXPERTISE

## Design & Manufacturing



### DESIGN ENGINEERING

- CAO 3d Solid Edge
- Static and Dynamic Simulation (FEA)
- Physical tests and validations (Impulse test, slosh test, filling tests)
- Mock-up and prototyping
- Approval management by certified organisms (UTAC, TUV, ICNN...)

### MANUFACTURING

- Design of production means
- Specific tools
- Definition modop. Solder (DMOS, QMOS)
- Industrialization and robotization (10 robotic welding cells)
- Pre-series, series up to 5000/year
- Deliverables : fully equipped tanks including fixing system (Plug & play)

## Why trust us?

The major interest for our customers and prospects is to have access to a **GLOBAL offer**.

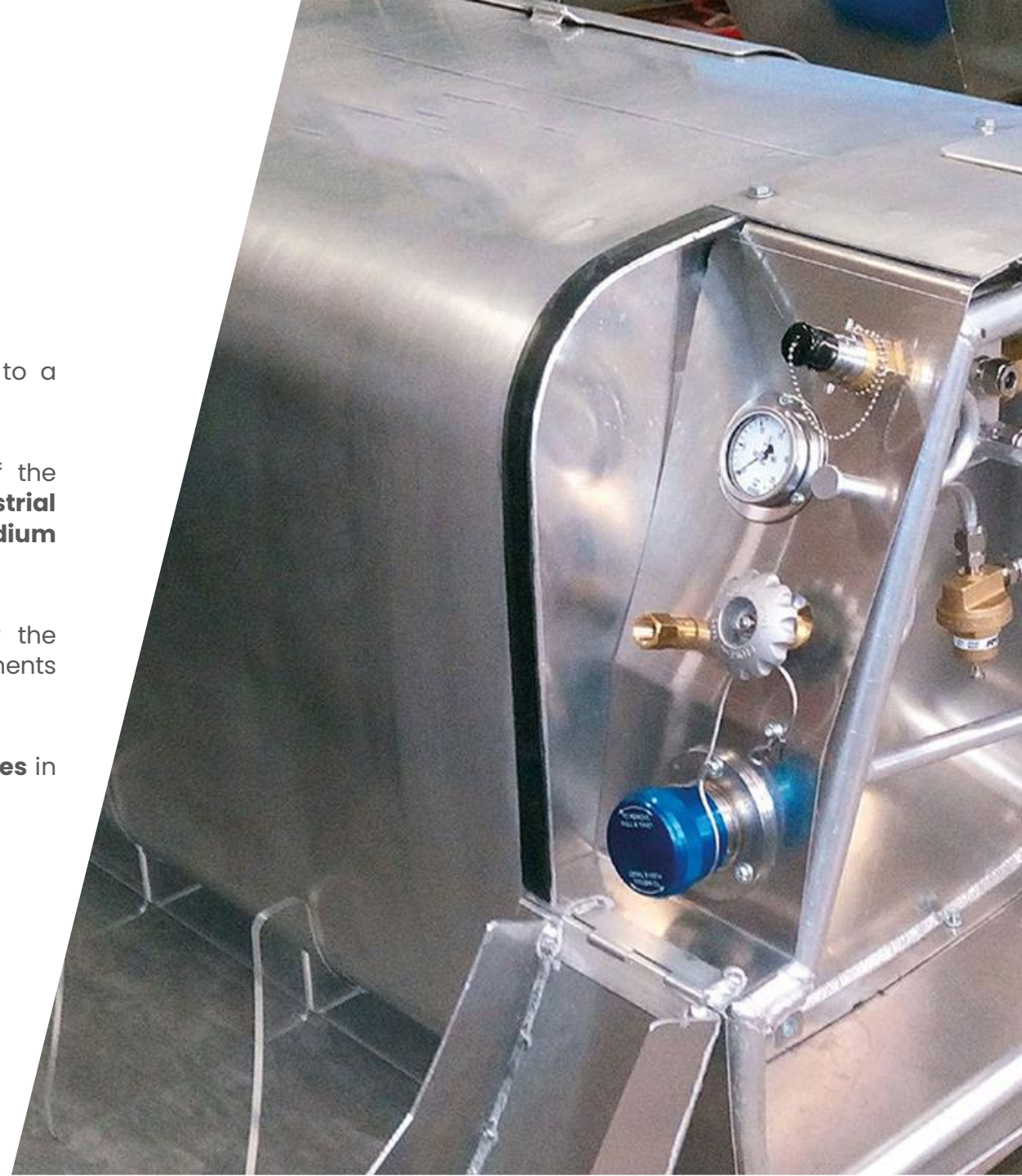
We offer expertise in **engineering, testing and approval**, regardless of the country of final destination, which we promote thanks to our **industrial capacities** that cover the production of **prototypes** up to **small or medium series** delivery.

In the case of quantities  $> 100$ /year, our **industrialization skills** allow the **robotization of our processes** in order to meet the competitiveness requirements of our customers.

We give you access to a database of **10,000 designs** including **best practices** in your field of activity.

Rely on 50 years of expertise to focus on your real added value.

→ If you are looking for a sustainable partner to co-develop and optimize the storage of your energy in a mobile environment, think **MMS INDUSTRY**.






# Bus & Coach products

ACGB expertise provides solutions for all types of reservoirs. Simple, complex, hydraulic, fuel or mixed and any combination. In terms of specifications, regulations and standards, you are assured that ACGB's expertise will deliver the product for your needs. It is no coincidence that our design rules are recognised by the market leaders.

## → Fuel Tanks

<p>Aluminium tank</p>  <p>▶ 485 litres</p>	<p>Aluminium tank for a double-decker bus</p>  <p>▶ 365 litres</p>	<p>Wheel arch tank</p>  <p>▶ 280 litres</p>	<p>Left and right refueling FMCSA compliant</p>  <p>▶ 785 litres</p>	<p>Wheel arch tank</p>  <p>▶ 290 litres</p>	<p>Chassis nested tank</p>  <p>▶ 235 litres</p>	<p>Stainless fuel tank</p>  <p>▶ 430 litres</p>
-----------------------------------------------------------------------------------------------------------------------------	-----------------------------------------------------------------------------------------------------------------------------------------------------	-------------------------------------------------------------------------------------------------------------------------------	-------------------------------------------------------------------------------------------------------------------------------------------------------------	--------------------------------------------------------------------------------------------------------------------------------	------------------------------------------------------------------------------------------------------------------------------------	------------------------------------------------------------------------------------------------------------------------------------

## → Expansion Tanks

<p>Aluminium water tank</p>  <p>▶ 17 litres</p>	<p>Aluminium water tank</p>  <p>▶ 8 litres</p>	<p>Aluminium water tank</p>  <p>▶ 2.5 litres</p>
------------------------------------------------------------------------------------------------------------------------------------	------------------------------------------------------------------------------------------------------------------------------------	---------------------------------------------------------------------------------------------------------------------------------------

# Bus & Coach products

## → Combi Tanks

Combi fuel/urea tank



▶ 245 litres Fuel/  
40 litres Urea

Combi fuel/urea tank



▶ 270 litres Fuel/  
20 litres Urea

## → Oil Tanks



▶ Aluminium  
10-litre oil tank



▶ Aluminium  
10-litre oil tank

## → Heater Tanks



▶ 35 litres



▶ 30 litres

## → Urea Tanks

Stainless steel



▶ 80 litres

Stainless steel



▶ 80 litres

# Marine products

ACGB expertise provides solutions for all types of reservoirs. Simple, complex, hydraulic, fuel or mixed and any combination. In terms of specifications, regulations and standards, you are assured that ACGB's expertise will deliver the product for your needs. It is no coincidence that our design rules are recognised by the market leaders.

## → Motor boats

Aluminium fuel tank



▶ 490 litres

Aluminium tank



▶ 520 litres

Port/Starboard tank



▶ 1400 litres

Port/Starboard tank



▶ 970 litres

Catamaran fuel tank



▶ 1600 litres

Fuel tank



▶ 625 litres

Gasoline tank



▶ 210 litres

Grey water tank




▶ 140 litres

# Marine products

## → Ribs

Fuel tank



▶ 180 litres

Gasoline tank



▶ 100 litres

Gasoline tank



▶ 80 litres

## → Sailing boats

Fuel tank



▶ 80 litres

## → Military boats

Stainless steel oily water tank



▶ 100 litres

Stainless steel fresh oil / used oil combitank




▶ 500 litres

Aluminium oily water tank



▶ 65 litres

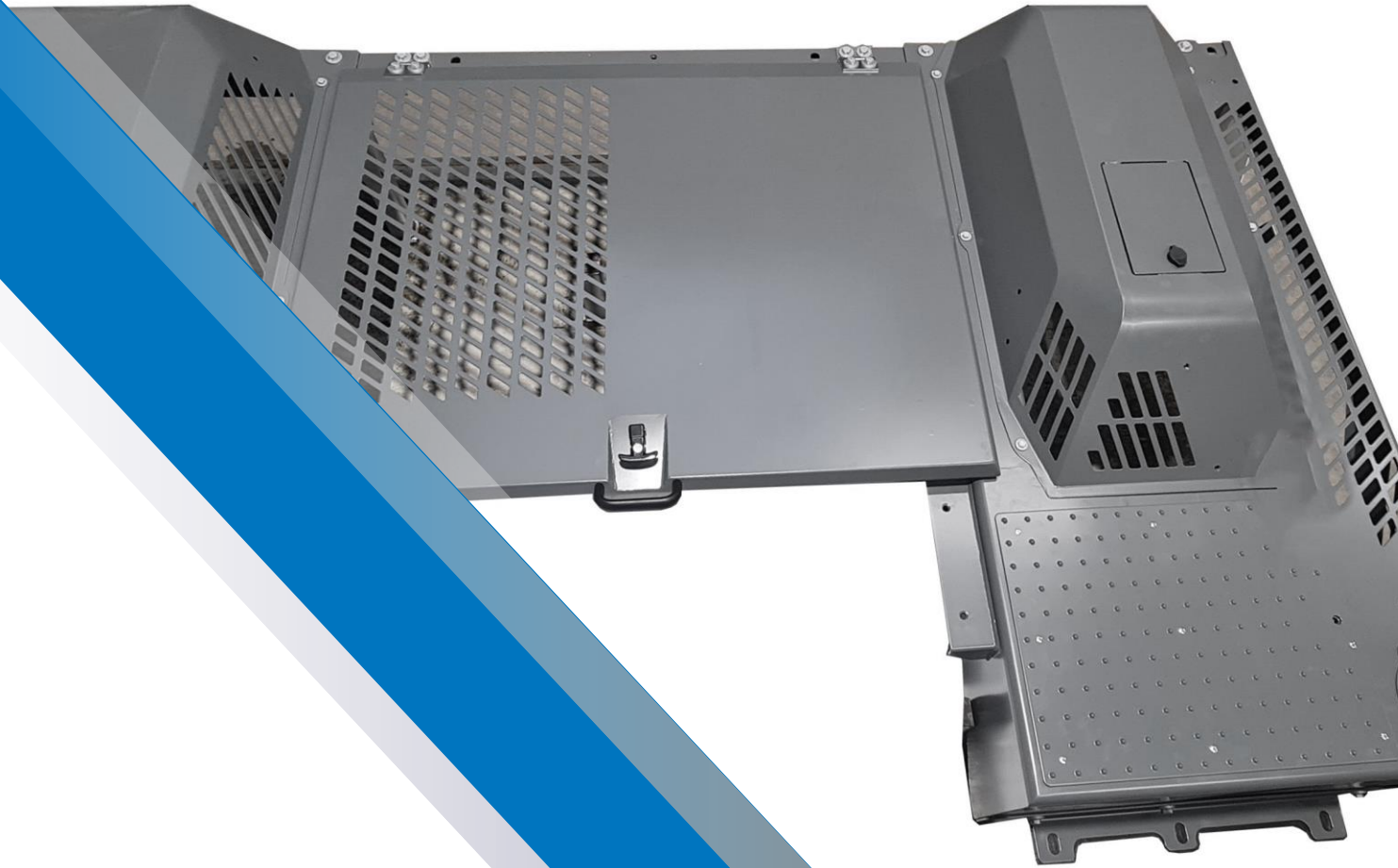
Fuel tank



▶ 500 litres

# SOLUTIONS

Business Unit



## *Your single point of contact for a total solution*

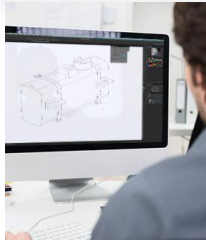
01

Consultation



02

Co-developement



03

Industrialisation



04

Manufacturing



05

Paint  
Finishing



06

Assembly



07

Control and  
Validation



08

Logistics  
Line Edge



# Protection

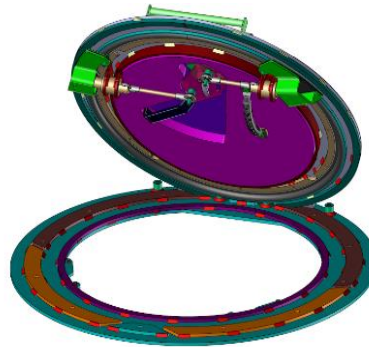
## Cowling

- Engine Housings
- Covers
- Toolboxes



## Opening

- Emergency exit
- Trucks door mechanism



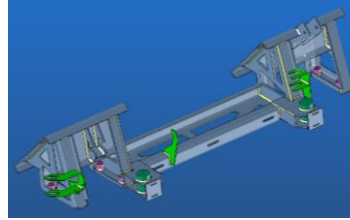
## KEY STRENGTHS

- Impact protection
- Soundproofing
- Rigidity

# Safety Products

## Passive safety

- Underrun bar
- Rear-facing structure
- Bodywork for roadworks machinery



## Lifting structures

- Support column
- Crane masts
- Basket Rack



## Mechanical Connection

- Coupling heads
- Articulated safety ball joints
- Connecting rods



## KEY STRENGTHS

- HLE and specific steels (S500, S700, MARS500, HARDOX)
- ISO 3834 Safety Weld
- Heat treatments (military requirements, etc.)

# Structures supports

## Support

- Waterproof battery box
- Dashboards
- Support frame



### KEY STRENGTHS

- Surface treatments
- Homologation

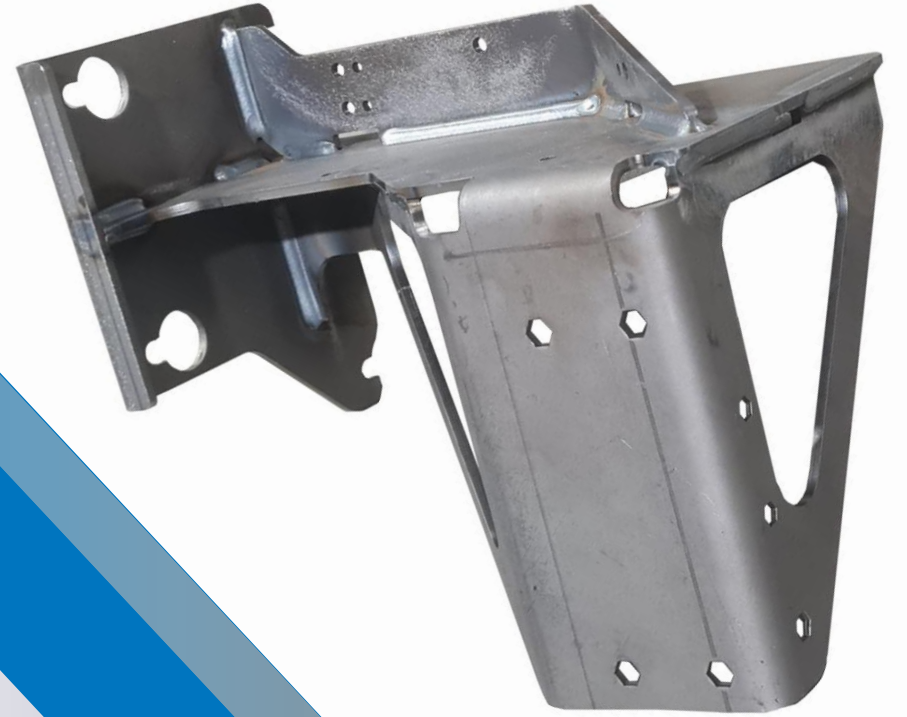
# Our achievements

*Possibility to support you on other applications and solutions.*

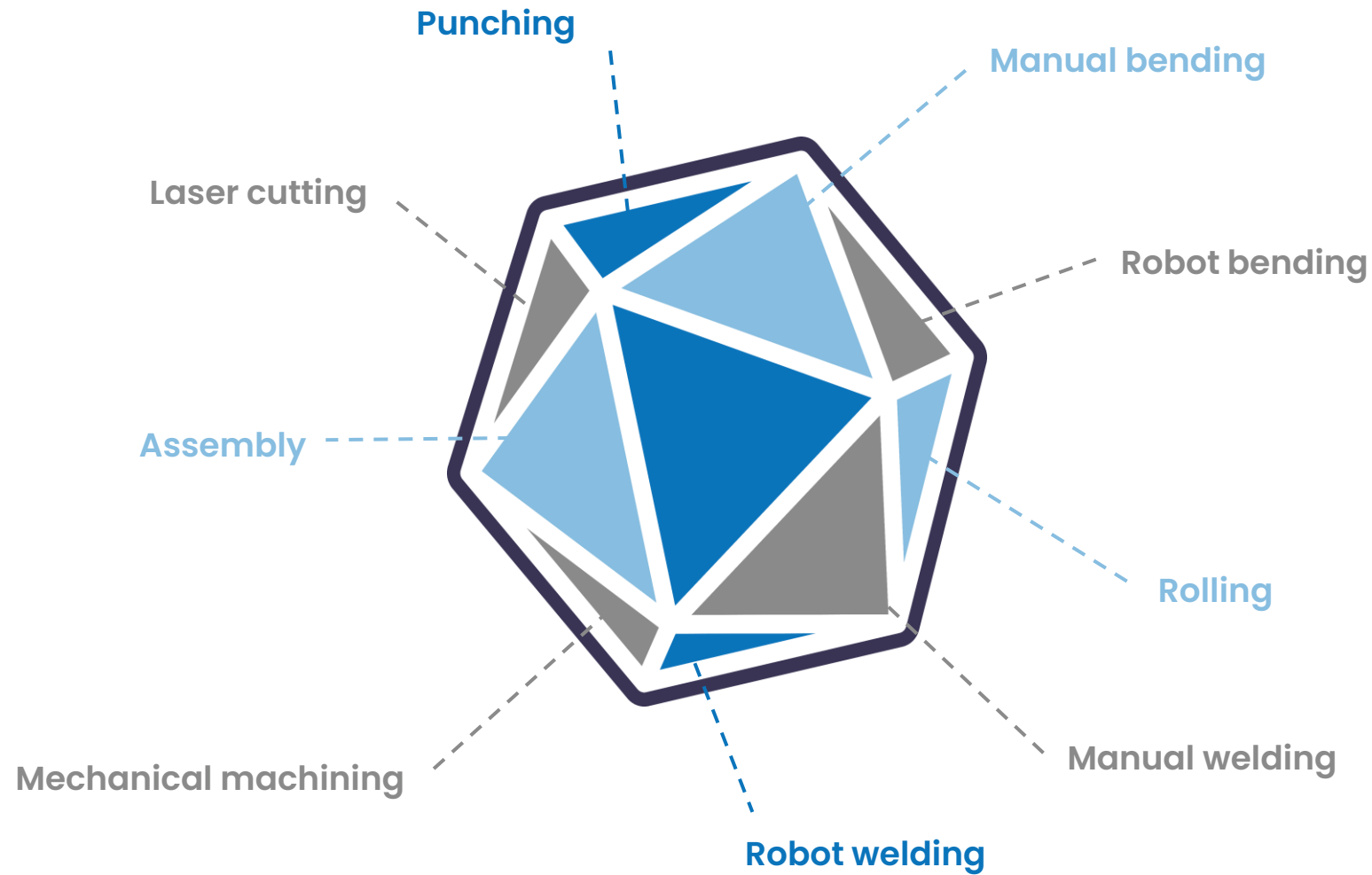


# SUBCONTRACTING

Business Unit



*We provide our customers and prospects  
a comprehensive multi-skills service*



Expertise

# Industrial sheet metal work

→ **Cutting and punching**

- 2 laser punch laser machines 4000 W  
(Max. Dim. : 1500 x 3000 mm)
- 3 laser cutting centers  
Fiber Laser 12 kW Auto Charging  
Max. thickness: 25 mm
- 2 sheet metal rolling machines: thickness 10 mm,  
width 3 m, Ø mini 280 mm
- Tube Flow: CN Ø 160 mm
- Tribofinition
- Double face deburring machine: width 1500 mm



→ **Bending and rolling**  
*Manual & Robotic*

- 5 CN bending center  
Max. Length: 4m  
Capacity: 36 to 170 T
- 3 robotic bending center  
130 to 170 T



→ **TIG-MIG-MAG Welding**  
*Manual & Robotic*

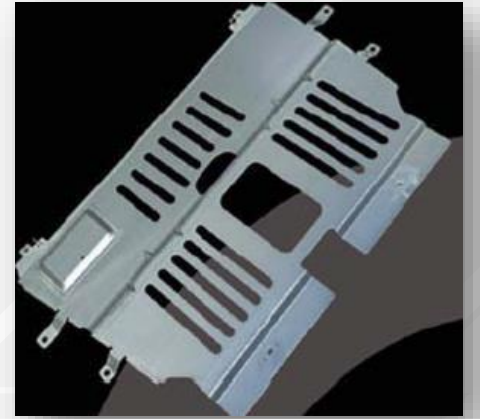
- 8 TIG MIG welding robots  
Max. Capacity: 4m
- 4 spot welding machines
- 40 TIG MIG Manual welding stations



Expertise

# Sheet metal

→ Some examples in sheet metal work



Expertise

# Mechanics

→ **Turning**

5 CN Turning Centers

- Robot loading and bar feeder



> New invest



> Turned part

→ **Milling**

Machining Centers:

- Vertical
- Horizontal
- Commuter



## Expertise

# Painting protection

### Fully automated powder coating line

- 4-stage sprinkler treatment tunnel: phosphating degreaser, mains water rinse, non-chromic passivation, demineralised water rinse
- Drying oven
- CN Powder Coating Booth with overhead conveyor



### Metallization

Pure zinc metallization



### Shot blasting

Stainless steel shot cabinet:  
L.10 000 x W. 4 480 x H. 3 360



### Powder Coating

Powder coating booth:  
L. 8 400 x l. 3 080 x H. 3 360  
  
Powder Coating Curing  
Oven:  
L. 7 980 x W. 3 080 x H. 3 360



### Liquid Paint

Double module liquid paint  
booth:  
L. 12 040 x W. 3 920 x H. 3 360



## Expertise

# Assembly

- 1000 m<sup>2</sup> dedicated to assembly and assembly
- Mounting of all manufactured, purchased or subcontracted elements on painted parts



# QSE Policy and certifications

## Our certifications

- ISO 9001 : 2019  
- ISO 14001 : 2019 
- IATF 16949 : 2019 
- ISO 3834-2  

## Our training schools

2 welding schools:

- Aluminium
- Steel
- Stainless steel



Merci – Thank you – Dankeschön



[www.mms-industry.com](http://www.mms-industry.com)

Contact

Michael Pfrang

Dipl. Wirt. Ing (FH)

Sales DACH

[m.pfrang@acgb.com](mailto:m.pfrang@acgb.com)

Tel: +49 (0)621 40 54 98 63

Cell: +49 (0)152 21 58 11 68

